



Ultimate PANORAMA Aluminium Bi-fold Doors Technical Specification

JohnFREDERICKS

MANUFACTURERS OF

theultimate[®]
collection

Aluminium Profile

- Reynaers CF68 profile
- Overall system depth = 68mm
- 48mm adjustable Jamb to both sides as standard
- Optional 28mm fixed jamb
- 54mm head
- 44mm threshold (other options available)
- 59.5mm sash
- Square bead
- Black gaskets
- Square cut outer frame
- Mitred and crimped sashes
- Thermal break - fibreglass reinforced polyamide strips

Colours

- Scan QR code to see our extensive colour range
- Sprayed to RAL colour of choice



Handles

- Lever/lever handles (only applies to doors with master sash). White, Polished Chrome, Satin Silver, Anthracite Grey, Black
- Intermediate handles. White, Polished Chrome, Satin Silver, Anthracite Grey, Black
- Centrefold D-handles White, Anthracite Grey, Black.

Standard Lock

- 6 point multipoint lock as standard
- Optional hook lock (2 hooks, 1 deadbolt and latch)
- Operated by lever/lever handle including key operated Yale 3 star cylinder (3 keys)

Hardware

- Top guide, bottom roller and hinges
White, Anthracite Grey, Black (Black as standard)

Glass Unit Options

- Standard 28mm double glazed toughened
- Optional 36mm triple glazed toughened
- Black warm edge spacer bar

Glazing Options

- Wide range of glass specifications available

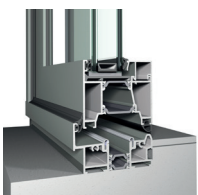
Ventilation

- When specified 5000 trickle vents are fitted through 52mm frame add-on section. Vents are colour coded to frame colour where our standard colour range is used

Accreditations

- Available with a Reynaers burglar resistance PAS24 rating (*not available with Flush threshold*)

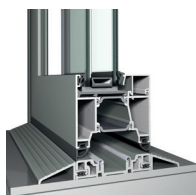
THRESHOLD OPTIONS



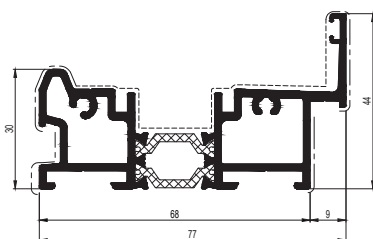
Level 3
Double weather seal
300Pa* Water Rating



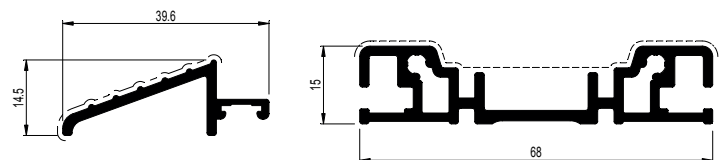
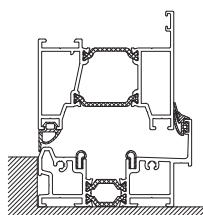
Level 2
Low threshold
200Pa* Water Rating



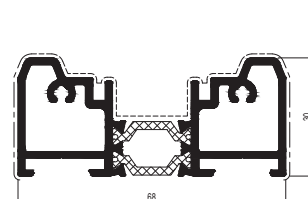
Level 1
Flush threshold
Internal Room Divider



level 3 Double weather seal



Level 1 Flush threshold

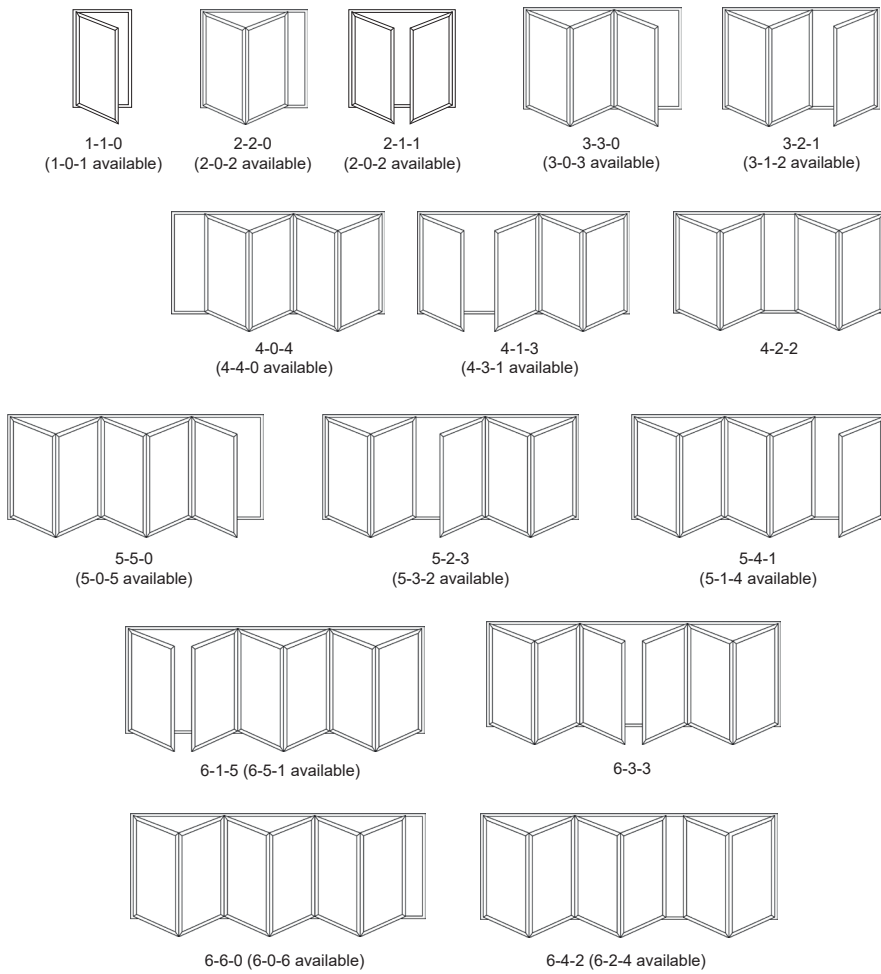


Level 2 Low threshold

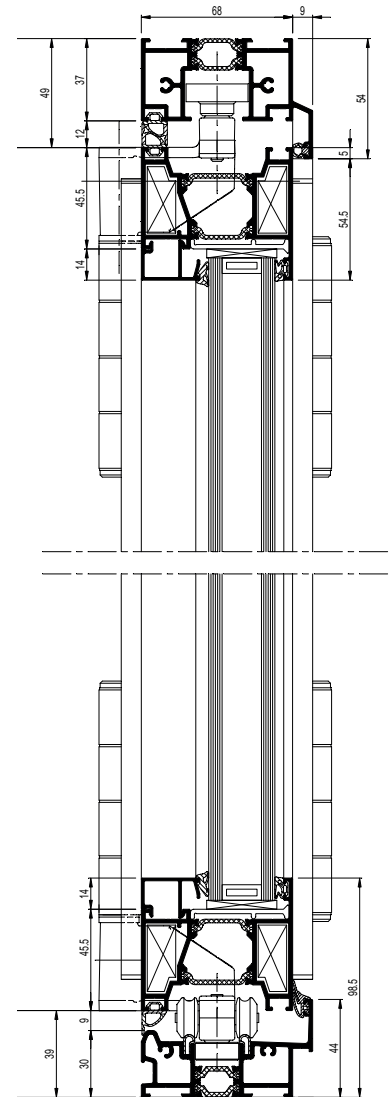
ULTIMATE PANORAMA ALUMINIUM BI-FOLD DOORS - TYPICAL SECTIONS

Doors can be Inward or Outward Opening
All measurements in mm

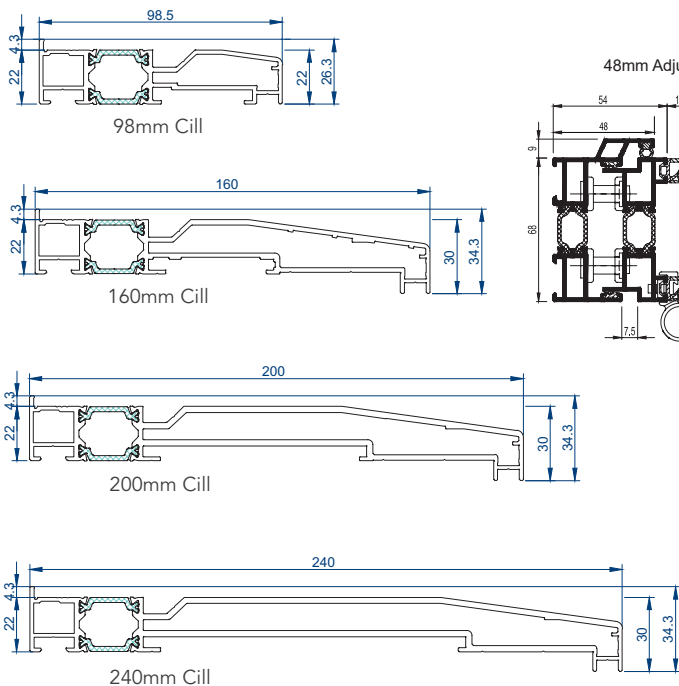
OPENING CONFIGURATIONS



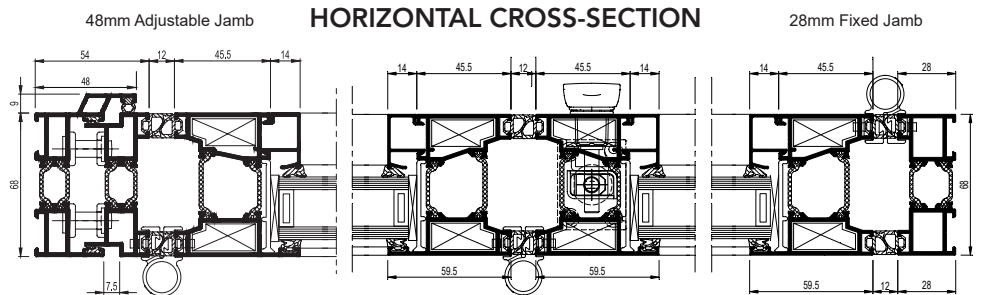
VERTICAL CROSS-SECTION



CILL OPTIONS



HORIZONTAL CROSS-SECTION



Min sash width 700mm Max sash width 1200mm

Min o/frame height 1900mm Max o/frame height 2412mm

Maximum outer frame width 6000mm

Maximum Weight per sash 120kg

Note:- Bi-fold Doors can be sited on all 22mm cills or on any of the aluminium thresholds as shown above or sited without cill.